



Driving Innovations in Care: Fueling a Better Medicaid

CONFERENCE PROGRAM

Indianapolis, IN • September 11-13, 2024



WELCOME

Dear MHPA24 Attendee,

Welcome to Indianapolis and MHPA24. This year's conference theme is *Driving Innovations in Care: Fueling a Better Medicaid*, and we're excited to wave the green flag on an educational lineup that showcases how MCOs are pioneering and advancing novel efforts to help improve quality of life, remove barriers to care, and revolutionize our understanding of how social issues influence individual health outcomes.

Since we met last year, Medicaid has undergone tremendous transformation through the redetermination process, and as a result, has come under immense scrutiny and examination. MCOs and our state partners have collaborated closely with the federal government to identify what worked and which areas need our continued and combined attention. While there are significant challenges ahead, we look forward to renewing our commitment to work together to preserve the stability of our nation's public health safety net.

Over the next few days, you'll gain new insight and unique perspectives from health plans, partners, state Medicaid directors, patient advocates, and federal policymakers on what it will take to advance Medicaid policy and programs to benefit enrollees, state governments, and the entire health care delivery system. The need for novel interventions to stem the nation's alarming maternal mortality rates, the demand for maternal mental health resources, and the extension of postpartum coverage led MHPA to create a new educational track this year dedicated entirely to maternal/infant health.

Inside the "lanes" of the exhibit hall and during networking "brakes" and reception "pit stops", you'll be in the driver's seat to apply newfound knowledge to your daily work and organization. We hope that you have a memorable experience with us here in Indianapolis "refueling" with colleagues in what promises to be a turbo-charged event.

Should you have any questions or concerns during the conference, please do not hesitate to reach out to an MHPA staff member or me at any time. We appreciate you being here in the crossroads of America and all that you do to ensure that the country's most vulnerable people have access to quality, affordable, and effective health care.

Drive on!

Craig A. Kennedy, MPH

President and CEO

Medicaid Health Plans of America

Insights, Innovation, and Impact

Enhancing healthcare quality, equity, and access.

Sellers Dorsey is the nation's leading Medicaid consulting firm.

Our team of former Medicaid directors, managed care executives, and government affairs professionals help solve clients' most mission-critical issues.



Scan to learn more
about our services.





Specialty networks, are your catalyst for change.



Looking to balance cost containment and member experience? The solution is hiding in plain sight.

Health Network One unlocks scalable value in specialty networks. In fact, our team of four hundred experts has delivered north of a half billion dollars in medical cost savings to our customers, while creating improved access and clinical quality for 8 million Medicaid and Medicare members.



WELCOME

Dear MHPA24 Attendees,

Welcome to MHPA24 – Driving Innovation in Care: Fueling a Better Medicaid – the premier Medicaid managed care event! Here, you’ll find valuable presentations with the latest in best-practice solutions and spend time with fellow leaders who share your expertise and mission to continue driving Medicaid forward. We hope you walk away with some new ideas and relationships.

When I think about Medicaid managed care, one word is top of mind: innovation. Easy to say and challenging to define, innovation demands creative leadership to meet the needs of the nation’s most critical healthcare program for vulnerable and ethnically diverse individuals. The laboratory of innovation for American healthcare is Medicaid, with enhancements and expansion at the state level being the core of exploration and investigation. And like an incubator providing warmth and life-sustaining support, Medicaid managed care (MCO) has consistently been a reliable safety-net partner during times of greatest need for the nation’s low-income, disabled, youth, elderly, and more.

Medicaid is also the workhorse for American healthcare. Whether unforeseen economic situations or policymaking challenges, no other public health program is pushed to the limit, and no other organizations are as well suited to answer the call like Medicaid MCOs. A long track-record of driving advancement in the Medicaid program has allowed Medicaid MCOs to improve enrollee health outcomes, transform the value of care, and lower government costs amid life’s unpredictable storms.

In the next three days, you’ll see the importance of Medicaid to America. You’ll also see firsthand managed care’s value in the country’s health care delivery system and its vital role in serving individuals with challenging health conditions and social needs in unique, meaningful, and impactful ways.

Thank you for attending and especially for your leadership to make Medicaid managed care stronger and greater for our government partners and members that we serve every day. Walk away with ideas to use and relationships to enjoy, knowing that your work in managed care helps improve the quality of life for millions.

Warm regards,

David Jacobson

MHPA24 Conference Chair
VP, Strategy & Business Development
Arkansas Blue Cross & Blue Shield



Join us!



The Unspoken Social Determinant of Health: Crafting a Loneliness Strategy for Optimal Outcomes

Friday, September 13, 10:00–10:50 am



JAMI SNYDER
President & CEO,
JSN Strategies



NATALIE COOPER
Plan President & CEO,
Wellpoint TN



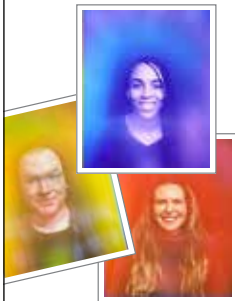
SUZE CUCCI
EVP Engagement &
Outcomes, Pyx Health

Learn about crafting and integrating a loneliness strategy within Medicaid plans to address risks associated with SDOH, emphasizing early intervention and innovative support services.

Opening reception - signature cocktails

Pyx Health will be hosting a bar at our booth during the opening conference reception on Wednesday, September 11th from 6 - 7:30pm.

Two signature cocktails will be offered:
(1) Paloma and (2) Old Fashioned.



Get an aura photo and see yourself in color!

Rays Aura Portraits will be joining us at our booth on Thursday, September 12th from 10:30am - 6:30pm.



Come see us at Booth #316

TABLE OF CONTENTS

- MHPA Board of Directors8**
- General Information10**
 - Registration/Information Desk..... 10
 - Complimentary Conference Wi-Fi..... 10
 - Conference Mobile App 10
 - Exhibit Hall Lounge 11
 - Charging Stations 11
 - Prize Drawings..... 11
- Schedule at a Glance12**
- Conference Agenda.....15**
 - Wednesday, September 11 15
 - Thursday, September 12..... 15
 - Friday, September 13 23
- Exhibits.....32**
 - Exhibitor Floorplan 32
 - Exhibitor Index 32
 - Exhibitor Profiles 34
- Sponsors54**
- Map of Hotel Inside Back Cover**

Conference Program Sponsored by:



MHPA BOARD OF DIRECTORS

MHPA Executive Committee

| | | |
|--|--|---|
| <p>Chair</p>  <p>Catherine K. Anderson Senior Vice President, Policy and Strategy UnitedHealth Group</p> | <p>Vice Chair</p>  <p>Chris Priest CEO, Meridian Michigan Centene Corporation</p> | <p>Treasurer</p>  <p>Wendy Morriarty Vice President, Medicaid & Chief Medicaid Officer Horizon NJ Health</p> |
| <p>Secretary</p>  <p>Melissa Holmquist CEO Upper Peninsula Health Plan</p> | <p>At-Large Member</p>  <p>Ellen Duffield, MBA President and CEO Highmark Wholecare</p> | <p>At-Large Member</p>  <p>Kurt Small President, Medicaid Elevance</p> |

| | | |
|---|---|--|
| <p>Aetna</p> <p>Mark Santos President</p> <p>Andrea Bennett, PhD, MSW Senior Director, Public Policy</p> | <p>AIDS Healthcare Foundation</p> <p>Donna Stidham Chief, Managed Care</p> <p>Michael O'Malley Plan Administrator</p> <p>AlohaCare</p> <p>Françoise Culley-Trotman CEO</p> | <p>Paula Arcena VP, External Affairs</p> <p>AmeriHealth Caritas</p> <p>Rebecca Engelman EVP, Medicaid Markets</p> <p>Stephen Cozzo VP, Government Relations & External Affairs & Public Policy</p> |
|---|---|--|

Arkansas Blue Cross & Blue Shield

David Jacobson
VP, Strategy & Business
Development

Matthew Vannatta
VP, Government Programs
& Enterprise Analytics,
COO

Centene Corporation

Margaret E. Peal
RVP, State Government
Affairs and State Policy

Community Behavioral Health

Donna Bailey
CEO

Andrew Devos
Chief Operations
Officer

Elevance Health

Amy Ingham
Senior Government
Relations Director

Health Care Service Corporation

Nancy Wohlhart
VP, Illinois Medicaid
Operations

Steven E. Johnson
Executive Director,
Government Programs

Highmark Wholecare

Joe Glinka
Director, PA HealthChoices

Horizon New Jersey Health

Mildred Menos
Director, Medicaid Product
Administration

Humana

John Barger
Medicaid President

Mitchell Evans
VP, Medicaid Strategy

Kaiser Permanente

Toby Douglas
SVP, Medicaid

Shannon McMahon
Executive Director,
Medicaid Policy

Molina Healthcare

Carolyn Ingram
EVP, External Affairs

Amy Tenhouse
VP, Federal Affairs

Sentara

Patricia J. Darnley
SVP, Government
Programs

Jeremy Greenfield, MSHA
VP, Government Relations

UnitedHealthcare

Kate Paris
VP, Advocacy,
Marketing and Policy

Upper Peninsula Health Plan

Melanie Bicigo
COO

UPMC for You

Brendan Harris
President

Nickalas Watsula
Chief HealthChoices Officer,
UPMC Health Plan
Chief Operating Officer,
State Contracts

General Information

Registration/Information Desk

Sponsored by: 

The Registration/Information Desk is located on the Third Floor Foyer of the JW Marriott Indianapolis.

The registration hours are as follows:

Wednesday, September 11, 2024

1:00pm – 7:30pm

Thursday, September 12, 2024

7:00am – 5:00pm

Friday, September 13, 2024

7:00am – 2:45pm

Badges must be worn in the exhibit hall and conference sessions.

Complimentary Conference Wi-Fi

Sponsored by: 

Complimentary Wi-Fi is being provided to attendees in the MHPA24 conference space. Thank you to Benchmark Human Services for this generous sponsorship.

Network: MHPA24

Access Code: BENCHMARK

MHPA Conference Mobile App

The conference mobile app contains a variety of useful information, including the conference agenda, session descriptions, speaker bios and photos, exhibitor information, session surveys, and more.

To download the MHPA Conference Mobile App to your smartphone or tablet, scan the QR code.



- » The first time you open the app, enter the event code: **mhpa24**
- » Log into the app using your MHPA registration email address and your personalized App PIN sent in your “Know Before You Go” conference email. The App PIN is also printed on the back of your badge. Logging into the app will unlock additional app features such as connecting with other conference attendees and sharing information. You must OPT-IN to attendee visibility to share contact details.

Exhibit Hall Lounge

Sponsored by 

Stop by the Exhibit Hall Lounge to refuel, take a “brake” between sessions, and connect with colleagues.

Charging Stations

Sponsored by:



For your convenience, there are (3) charging stations located in the Exhibit Hall. Please do not leave your cell phone unattended.

Prize Drawings

Win a prize at MHPA24! Visit exhibitors and complete session surveys in the conference mobile app to earn points for raffle tickets. Your feedback is greatly appreciated and will help to improve future MHPA meetings. Prizes include gift cards up to \$250, MHPA25 registrations, Bose speakers, and more! Pick up your earned raffle tickets at the Registration/Information Desk and enter to win prizes! Earn more points by checking your conference app for raffle ticket earning activities! **The information is found in the conference app in the icon Win Points for Raffle Tickets. Click on the “Goals” tab to view point earning activities.**

Schedule at a Glance

| Wednesday, September 11, 2024 | | | | | | |
|---|---|--|--|--|--|--|
| 9:45am - 12:00pm | MHPA Joint Committee Meeting (invitation only) <i>Rooms 302/303</i> | | | | | |
| 12:00pm - 5:30pm | MHPA Board of Directors Meeting (invitation only) <i>Rooms 304/305/306</i> | | | | | |
| 1:00pm - 7:30pm | Registration/Information Desk Open Sponsored by Elevance Health <i>3rd Floor Foyer</i> | | | | | |
| 1:00pm - 5:30pm | Exhibitor Booth Set-up <i>JW Ballroom 5-10</i> | | | | | |
| 6:00pm - 7:30pm | Welcome Reception <i>JW Ballroom 5-10</i> | | | | | |
| 6:30pm - 9:30pm | MHPA Board of Directors Dinner (invitation only) | | | | | |
| Thursday, September 12, 2024 | | | | | | |
| 7:00am - 5:00pm | Registration/Information Desk Open Sponsored by Elevance Health <i>3rd Floor Foyer</i> | | | | | |
| 7:15am - 8:30am | Networking Breakfast Sponsored by MTM <i>JW Ballroom 5-10</i> | | | | | |
| 8:30am - 9:45am | OPENING GENERAL SESSION Mission Moment Sponsor: UnitedHealthcare <i>JW Ballroom 4</i> | | | | | |
| CONCURRENT WORKSHOPS 10:00am - 10:50am | Equity | SDOH | Policy | MCH | MLTSS | Equity |
| | Tackling Health Equity Head On: Using a Cultural Competency Driven Approach to Address Health Outcome Disparities | Achieving Health Equity Through 1115 Waivers | What's on Tap for the Lame Duck: Congressional Activity Impacting Medicaid to Close Out 2024 <i>(off the record/closed to press)</i> | How Managed Care Helps Transform Foster Care Systems | Successful Strategies for Demonstrating Managed Care Readiness for the IDD Population Sponsored by QCSS Health | Virtual Treatment Model for Opioid Use Disorder Reduces Barriers to Access for Highly Vulnerable Populations |
| | <i>Room 304/305/306</i> | <i>Room 302/303</i> | <i>JW Ballroom 1</i> | <i>Room 309/310</i> | <i>Room 312</i> | <i>Room 308</i> |
| 10:50am - 11:30am | Networking & Refreshment Break <i>JW Ballroom 5-10</i> | | | | | |

| CONCURRENT WORKSHOPS 11:30am - 12:20pm | Equity | SDOH | Policy | MCH | SDOH | |
|---|---|--|--|--|--|--|
| | Health Equity: Moving from Initiative to Identity | Emerging Trends on Implementing State Coverage of Health-Related Social Needs (HRSN) within Managed Care | 2024 CMS Regulatory Sprint: A Panel Discussion on the Medicaid Impacts of Recently Finalized Rulemaking <i>(off the record/closed to press)</i> | Collaborating to Automate Pregnancy Risk Assessment and Ensure Continuity of Medicaid Coverage | How Payer-Provider Partnerships Can Build Trust and Improve Health Outcomes for Vulnerable Medicaid Populations | |
| | <i>Room 302/303</i> | <i>Room 304/305/306</i> | <i>JW Ballroom 1</i> | <i>Room 309/310</i> | <i>Room 308</i> | |
| 12:20pm - 1:45pm | Networking Lunch <i>JW Ballroom 5-10</i> | | | | | |
| CONCURRENT WORKSHOPS 1:45pm - 2:35pm | Equity | SDOH | Policy | MCH | MLTSS | SDOH |
| | What Matters is Dignified Care: Improving Health Care Access For People Who Are Justice Involved | Beyond Food as Medicine: Nutrition for Life | Looking Beyond: Best Practices and Lessons Learned from the Medicaid Redetermination Unwinding Period Sponsored by Kaiser Permanente | Achieving Organizational Alignment to Drive Equitable Maternal & Infant Health Outcomes | How Managed Care Organizations can use Value-Based Contracting to Improve Quality and Address the Direct Care Workforce Crisis | Advancing Chronic Care Access: Ochsner & Humana's RPM Partnership for Medicaid Beneficiaries |
| | <i>Room 304/305/306</i> | <i>Room 309/310</i> | <i>JW Ballroom 1</i> | <i>Room 302/303</i> | <i>Room 312</i> | <i>Room 308</i> |
| 2:35pm - 3:30pm | Networking & Refreshment Break <i>JW Ballroom 5-10</i> | | | | | |
| 3:30pm - 5:00pm | GENERAL SESSION: A Conversation with State Medicaid Directors <i>(off the record/closed to press)</i> Mission Moment Sponsor: Centene Corporation Sponsored by Sellers Dorsey <i>JW Ballroom 4</i> | | | | | |
| 5:00pm - 6:30pm | Conference Reception <i>JW Ballroom 5-10</i> | | | | | |

| Friday, September 13, 2024 | | | | | | |
|--|---|---|---|--|---|--|
| 7:00am - 2:45pm | Registration/Information Desk Open Sponsored by Elevance Health <i>3rd Floor Foyer</i> | | | | | |
| 7:15am - 8:30am | Networking Breakfast <i>JW Ballroom 5-10</i> | | | | | |
| 8:30am - 9:45am | GENERAL SESSION: Election 2024 - What's at Stake for Health Care Policy Sponsored by Horizon NJ Health <i>JW Ballroom 4</i> | | | | | |
| 10:00am - 10:50am CONCURRENT WORKSHOPS | Equity | SDOH | Policy | MCH | MLTSS | Equity |
| | A Medi-Cal MCO Journey to Effectively Fill Health Equity Gaps Through Digital Innovation | The Unspoken Social Determinant of Health - Crafting a Loneliness Strategy for Optimal Outcomes | Unlocking the Potential of Technology-Driven Solutions in Medicaid: MCO Learnings and Recommendations | Rethinking Pregnancy, Childbirth and Post-Partum Tools and Policies: A Panel Discussion Sponsored by AlohaCare | Barriers, Best Practices, and Policy Recommendations on Supporting a Consumer's Navigation of their Integrated Care Options | From Bench to Bedside to Curbside: Supporting Rising Risk Medicaid Members Through Community-Based Interventions |
| | Room 312 | Room 304/305/306 | JW Ballroom 1 | Room 308 | Room 309/310 | Room 302/303 |
| 10:50am - 11:30am | Networking & Refreshment Break <i>JW Ballroom 5-10</i> | | | | | |
| 11:30am - 12:45pm | GENERAL SESSION: Award Ceremony & Raffle Drawings <i>JW Ballroom 4</i> | | | | | |
| 12:45pm - 1:45pm | Networking Lunch <i>JW Ballroom 5-10</i> | | | | | |
| 1:45pm - 2:35pm CONCURRENT WORKSHOPS | Equity | SDOH | Policy/MLTSS | | | |
| | Shifting from Traditional to Transformational Care: Reimagined Roles and Strategic Partnerships within MCOs to Deliver Equitable Outcomes | Beyond Barriers: Utilizing Technology to Overcome SDOH and Engage Medicaid Populations | Navigating the Medicare Advantage Final Rule: Implications for Medicare & Medicaid Integration | | | |
| | Room 302/303 | Room 309/310 | JW Ballroom 1 | | | |
| 1:45pm - 4:00pm | Exhibitor Booth Teardown <i>JW Ballroom 5-10</i> | | | | | |
| 2:35pm | End of Conference | | | | | |

Agenda

Wednesday, September 11, 2024

9:45am – 12:00pm

MHPA Joint Committee Meeting
(invitation only)

Location: Room 302/303

12:00pm – 5:30pm

MHPA Board of Directors Meeting
(invitation only)

Location: Room 304/305/306

1:00pm – 7:30pm

Registration/Information Desk Open
Location: Third Floor Foyer

Sponsored by:



1:00pm – 5:30pm

Exhibitor Set-up

Exhibitors located in section 5 of the Ballroom will not set up until 3:30pm.
Location: JW Ballroom 5-10

6:00pm – 7:30pm

Welcome Reception

Location: JW Ballroom 5-10

6:30pm – 9:30pm

MHPA Board of Directors Dinner
(invitation only)

Thursday, September 12, 2024

7:00am – 5:00pm

Registration/Information Desk Open
Location: Woodrow Wilson Foyer

Sponsored by:



7:15am – 8:30am

Networking Breakfast

Location: JW Ballroom 5-10

Sponsored by:



8:30am – 9:45am

Opening General Session

Location: JW Ballroom 4

Mission Moment Sponsor:



During MHPA's Opening Session, Dr. Daniel Rusyniak, the Secretary of the Indiana Family and Social Services Administration, will deliver remarks welcoming attendees to Indiana and discuss some of the innovative health care related initiatives in the state. Following Dr. Rusyniak's remarks, Dr.

Gary Puckrein, President & CEO for the National Minority Quality Forum (NMQF) will deliver the keynote address focused on health equity and the challenges to be addressed in our health care landscape. Dr. Puckrein will highlight several NMQF projects that are helping to identify and address barriers to care for underserved populations. Following his remarks, MHPA leadership will highlight the work being done by plans to help millions of Medicaid enrollees get the high-quality health care they need and what efforts are being made to improve access to care across the country.

Speakers:

Secretary Daniel Rusyniak, MD, Indiana Family and Social Services Administration

Gary Puckrein, MD, President and CEO, National Minority Quality Forum Inc.

Catherine Anderson, Senior Vice President, Health Equity Strategy, UnitedHealthcare, MHPA Board Chair

CONCURRENT WORKSHOPS

10:00am – 10:50am

EQUITY TRACK

Tackling Health Equity Head On: Using a Cultural Competency Driven Approach to Address Health Outcome Disparities

Location: Room 304/305/306

Learn how HCSC, an NCQA Health Equity accredited organization,

developed a robust and effective health equity program to tackle health outcome inequities across its Medicaid population. Hear how they have utilized culturally competent data to partner with community organizations across three states to meet the members where they are.

Speakers:

Angela Haggard, Senior Vice President, Sage Health Strategy

Suzanne Letang, Clinical Strategy Manager, Quality Improvement & Health Equity, Health Care Services Corporation (HCSC)

Beth A. Markley, RN, MSN, Clinical Strategy Manager, Blue Cross Blue Shield of Illinois, Government Programs

Hetal Shah, Director, Sage Health Strategy

SDOH TRACK

Achieving Health Equity Through 1115 Waivers

Location: Room 302/303

Efficient data sharing can simplify referrals, improve care coordination, and eliminate redundancy, enabling better resource allocation. Join us for a discussion on promoting health equity through linking data, bridging gaps, and addressing health disparities.

Speakers:

Karen Iapocce, RN-BC, MS, CPHQ, CMAC, CAPA, LSSBB, Senior Director of Government Programs & Products, ZeOmega

Chantel Neece, DNP, MBA, APRN, FNP-BC, GERO-BC, CPHQ, SSBPP, Sr. Director, Maternal/Child Services & Member SDOH, Sentara Health Plans

POLICY TRACK

What's on Tap for the Lame Duck: Congressional Activity Impacting Medicaid to Close Out 2024 (off the record, closed to press)

Location: JW Ballroom 1

A “lame duck” session in Congress is the period following the November elections and before the start of a new Congress when legislative activity, untethered from political dynamics impacting policymaking earlier in the session, shifts into overdrive. During this session, take a deep dive into the legislative priorities impacting Medicaid and managed care that Congress has its eye on for the 2024 lame duck session and learn about how your plan can plug into MHPA’s congressional advocacy to advance legislation that best supports the millions of Americans who rely on Medicaid for lifesaving coverage and care.

Speakers:

Sean Garrity, Director, Federal Affairs, Medicaid Health Plans of America

Heather Hallman, Director of Government Relations, UPMC Health Plan

Rick Van Buren, Director of Health Policy, Cozen O’Connor Public Strategies

Shannon Attanasio, Senior Vice President, Government Relations, Policy & Advocacy, Medicaid Health Plans of America (Moderator)

MCH TRACK

How Managed Care Helps Transform Foster Care Systems

Location: Room 309/310

What drives the health and well-being of an individual also drives the health and well-being of a system. This session will challenge us all in the managed care field to think differently about how healthcare can help transform struggling foster care systems.

Speakers:

Cheryl Fisher, Vice President, Business Development for Foster Care and Child Welfare Programs, Centene

Scott Lundy, CEO, Arrow Child and Family Ministries and Foster/Adoptive parent

Karen McLeod, President and CEO, Benchmarks

Katie Olse, Senior Director for Child and Family Well-Being, Sellers Dorsey (Moderator)

MLTSS TRACK

Successful Strategies for Demonstrating Managed Care Readiness for the IDD Population

Sponsored by:



Location: Room 312

As states move to integrate the Intellectual/Developmental Disability (IDD) population into Medicaid-managed care, health plans are challenged by negative assumptions about their ability to support people with IDD. This panel will identify readiness review pain points and provide interventions designed to minimize member and provider abrasion and demonstrate organizational readiness.

Speakers:

Taylor Blake, National Director of Network Management and Long-Term Services and Supports, Elevance Health

Craig Escudé, MD, FAAFP, FAADM, President, IntellectAbility

Lorene Reagan, MS, RN, Strategic Advisor, IntellectAbility

Shawn Rector, Self-Advocate

EQUITY TRACK

Virtual Treatment Model for Opioid Use Disorder Reduces Barriers to Access for Highly Vulnerable Populations

Location: Room 308

Highmark Wholecare and Ophelia collaborate to bring high-quality evidence-based Opioid Use Disorder (OUD) treatment to Medicaid members. Ophelia’s virtual model allows patients who have experienced high barriers to access comprehensive treatment quickly and safely.

Speakers:

Lakshmi Reddy, MD, Senior Medical Director, Highmark Wholecare

Arthur Robin Williams, MD, Chief Medical Officer, Ophelia Health Inc.

10:50am – 11:30am

Networking & Refreshment Break

Location: JW Ballroom 5-10

CONCURRENT WORKSHOPS

11:30am – 12:20pm

EQUITY TRACK

Health Equity: Moving from Initiative to Identity

Location: Room 302/303

Current trends and national conversation around Diversity, Equity, and Inclusion (DEI) present challenges for Medicaid MCOs working to address the root causes of health disparities and advance health equity. Presenters will share UPMC Health Plan’s experience and discuss practical next steps in striving to move health equity from an initiative to an organizational identity.

Speakers:

Crystal Clark, MD, MPH, Chief Medical Officer for Community HealthChoices, UPMC Health Plan

Janine Jelks-Seale, MSPPM, Director of Health Equity, UPMC Health Plan

SDOH TRACK

Emerging Trends on Implementing State Coverage of Health-Related Social Needs (HRSN) Within Managed Care

Location: Room 304/305/306

Join representatives from Kaiser Permanente, the Center for Health Care Strategies, and Michigan Medicaid to discuss emerging state trends on health-related social needs (HRSN). Presenters will share emerging practices and lessons learned about states’ and plans’ health care and community-based organization partnerships, new benefits, and development of HRSN outcome measures.

Speakers:

Brad Barron, MPA, Director, Managed Care Plan Division, Behavioral and Physical Health and Aging Services Administration, Michigan Department of Health and Human Services

Tricia McGinnis, MPP, MPH, Executive Vice President, Center for Health Care Strategies

Shannon McMahon, Executive Director, Kaiser Permanente

POLICY TRACK

2024 CMS Regulatory Sprint: A Panel Discussion on the Medicaid Impacts of Recently Finalized Rulemaking (off the record, closed to press)

Location: JW Ballroom 1

2024 was a busy year for CMS as it finalized a high volume of landmark

final rules impacting managed care and the Medicaid program. Join us for a panel discussion as we walk through key final regulations including the Managed Care Rule, the Ensuring Access to Medicaid Services Rule, and the Enrollment and Eligibility Rule, highlighting the most significant provisions likely to shape the future of the Medicaid program.

Speakers:

Andrea Bennett, PhD, MSW, Senior Director, Public Policy, CVS Health

Kate Paris, Vice President Policy & Advocacy, UnitedHealthcare Community & State

Jack Rollins, Director of Federal Policy, National Association of Medicaid Directors

Nicolas Wilhelm, JD, Director, Regulatory Affairs, Medicaid Health Plans of America (Moderator)

MCH TRACK

Collaborating to Automate Pregnancy Risk Assessment and Ensure Continuity of Medicaid Coverage

Location: Room 309/310

Learn how collaboration between Azara Healthcare, Ohio Association of Community Health Centers and MCOs resulted in automating collection of PRAF data directly from OACHC PRAF providers’ EHRs. We will highlight successes, challenges, and opportunities to ensure continuity of Medicaid coverage, improve care and reduce burden when actionable data are available.

Speakers:

Jessica Ball, RHIA, CHPI, HCCN, Director, Ohio Association of Community Health Centers (OACHC)

Erin Brigham, MPH, CPHQ, Senior Director, Quality and Population Health, CareSource

Joel Kauffman, Clinical Informatics Program Manager, OACHC

LuAnn Kimker, RN, MSN, Senior Vice President Clinical Transformation, Azara Healthcare

Mark Rastetter, MD, Chief Medical Officer and Regional Vice President, Health Services, Humana Ohio Medicaid

SDOH TRACK

How Payer–Provider Partnerships Can Build Trust and Improve Health Outcomes for Vulnerable Medicaid Populations

Location: Room 308

Learn how effective payer-provider partnerships can help to address social determinants of health and in turn, reduce unnecessary hospital visits, cut healthcare costs and enhance patient trust among Medicaid members.

Speakers:

Darrell Gray, II, MD, MPH, President, Wellpoint

Amy Miller-Bowman, VP of Business Development, Molina Healthcare

Michael Radu, Chief Executive Officer, AbsoluteCare

12:20pm – 1:45pm

Networking Lunch

Location: JW Ballroom 5-10

CONCURRENT WORKSHOPS

1:45pm – 2:35pm

EQUITY TRACK

What Matters is Dignified Care: Collaborating to Improve Equity for People Who Are Justice Involved

Location: Room 304/305/306

In the U.S., nearly 7 million people are incarcerated, on probation, or on parole. This large population experiences disproportionate rates of physical & mental health conditions, often due to uncoordinated release from carceral settings. Learn how Medicaid can partner to support a more equitable system of care.

Speakers:

Susan Donovan, Senior Director, Quantified Ventures

Blair Harrison, Policy Director of Population Health and Social Care, UnitedHealthcare Community & State

Amber Kemp, Vice President, Medi-Cal Strategy, Execution, and Engagement, Health Net – a subsidiary of Centene Corporation

Tyler Winkelman, MD, MSc, Co-Director of the Health, Homelessness, and Criminal Justice Lab, Hennepin Healthcare Research Institute

SDOH TRACK

Beyond Food as Medicine: Nutrition for Life

Location: Room 309/310

There is no understating the connection between diet and health. Food as medicine continues to be a main focus, but it is time to think beyond that to nutrition for life. This session will encourage attendees to think creatively about how healthcare can help provide lifelong learning around food.

Speakers:

Jillian Bridgette Cohen, CEO and Co-Founder, Virtual Health Partners

Suzanne Letang, LCPC, CCM, Clinical Strategy Manager, Health Care Service Corporation (HCSC)

Catherine Macpherson, Senior Vice President, Chief Nutrition Officer, Mom’s Meals

Gary Jessee, Senior Vice President, Sellers Dorsey (Moderator)

POLICY TRACK

Looking Beyond: Best Practices and Lessons Learned from the Medicaid Redetermination Unwinding Period

Location: JW Ballroom 1

 **Sponsored by:**



Through extensive Medicaid redetermination outreach campaigns and community engagement, states

and MCOs have worked through many challenges with the goal of ensuring Medicaid beneficiaries maintained coverage during the Medicaid unwinding period. This session will share challenges, lessons learned, best practices, and how states and MCOs are looking ahead beyond the unwinding.

Speakers:

Mildred Menos, Director, Product Administration - Medicaid, Horizon BCBSNJ

Cora Steinmetz, Medicaid Director, Indiana Family and Social Services Administration

John Szczec, Director, Medicaid Program Management and Strategy Execution, Kaiser Permanente

Stephen Cozzo, Vice President Government & External Affairs/Public Policy, AmeriHealth Caritas (Moderator)

MCH TRACK

Achieving Organizational Alignment to Drive Equitable Maternal & Infant Health Outcomes

Location: Room 302/303

Nowhere is health inequity more visible than in maternal and infant health. This crisis requires shifts across the entire healthcare landscape – with the opportunity for MCOs to play a significant leadership role. Join us for an in-depth discussion on building equitable maternal and infant health programming for your members.

Speakers:

Chantel Neece, DNP, MBA, APRN, FNP-BC, GERO-BC, CPHQ, SSBBP, Sr. Director Maternal/Child Services & Member SDO, Sentara Health Plans

Brian Shivler, National Senior Vice President, Sales, ProgenyHealth

Jennifer A. Sweet, MBA, MA, Chief Executive Officer, Aetna Better Health of Florida

MLTSS TRACK

How Managed Care Organizations Can Use Value-Based Contracting to Improve Quality and Address the Direct Care Workforce Crisis

Location: Room 312

How can MCOs use value-based contracting (VBC) to address the ongoing direct care workforce crisis? Join the MLTSS Association to learn more about actionable policy proposals and best practices to advance VBC in MLTSS and how it can drive quality and direct care workforce solutions.

Speakers:

Tomas Bednar, Senior Vice President & Counsel, Healthspieren

Mary Kaschak, CEO, National MLTSS Health Plan Association

Anna Keith, Vice President, LTSS & Community Outreach, Centene

Kris Kubnick, CSW, MPA, Product Management Director, Elevance Health

SDOH TRACK

Advancing Chronic Care Access: Ochsner & Humana’s RPM Partnership for Medicaid Beneficiaries

Location: Room 308

Explore Ochsner & Humana’s groundbreaking partnership, extending RPM programs to Medicaid beneficiaries in Louisiana. Discover how this collaboration is overcoming barriers to chronic care, particularly for those facing social determinants of health challenges, fueling better outcomes for diabetes and hypertension.

Speakers:

Kenny Cole, MD, System VP of Clinical Improvement, Ochsner Health

Kimberly Williams, MPP, Director, Health Equity & Population Health, Humana Healthy Horizons

Rob Keefe, National Director - Payer Market, Ochsner Health (Moderator)

2:35pm – 3:30pm

Networking & Refreshment Break

Location: JW Ballroom 5-10

3:30pm – 5:00pm

General Session – A Conversation with State Medicaid Directors (off the record/closed to press)

Mission Moment Sponsor:



Sponsored by:



Location: JW Ballroom 4

Medicaid Directors have one of the most important and challenging jobs in state government and health care. With the program now covering more than 80 million low-income, elderly and disabled individuals – 1 in 4 Americans – it is the single largest expenditure in most state budgets. Medicaid Directors from three states and former Texas Medicaid Director, Gary Jessee from Sellers Dorsey will discuss how state Medicaid programs are tackling issues that improve health equity and access to services that address maternal and infant health, social determinants of health (SDOH) and managed long-term services and supports. They will also discuss how they and their Governors are increasing the quality of care for our nation’s underserved and vulnerable populations, while improving efficiency and sustainability. This roundtable conversation will be moderated by Chris Priest of the Centene Corporation.

Panelists:

Lisa Lee, Medicaid Director, Kentucky Department for Medicaid Services

Cheryl Roberts, JD, Medicaid Director, Virginia Department of Medical Assistance Services

Cora Steinmetz, Medicaid Director, Indiana Family and Social Services Administration

Gary Jessee, Senior Vice President, Sellers Dorsey

Chris Priest, CEO, Meridian Michigan, Centene Corporation (Moderator)

5:00pm – 6:30pm

Conference Reception

Location: JW Ballroom 5-10

FRIDAY, SEPTEMBER 13, 2024

7:00am – 2:45pm

Registration/Information Desk Open

Location: Third Floor Foyer

Sponsored by:



7:15am – 8:30am

Networking Breakfast

Location: JW Ballroom 5-10

8:30am – 9:45am

General Session – Election 2024: What’s at Stake for Health Policy?

Location: JW Ballroom 4

Sponsored by:



The 2024 election will have a profound impact on the future of Medicaid. During this general session, two individuals who have served as senior health policy advisors in Democratic and Republican administrations will debate what's at stake for health care, particularly Medicaid, post-election. During this moderated discussion, Chris Jennings and Brian Blase, two prominent voices in their respective political parties on health policy issues, will discuss how the different electoral outcomes could shape Medicaid in the years to come.

Panelists:

Brian Blase, PhD, President, Paragon Health Institute

Chris Jennings, President, Jennings Policy Strategies, Inc.

Alice Miranda Ollstein, Health Care Reporter, Politico (Moderator)

CONCURRENT WORKSHOPS

10:00am – 10:50am

EQUITY TRACK

A Medi-Cal MCO Journey to Effectively Fill Health Equity Gaps Through Digital Innovation

Location: Room 312

Learn how a Medi-Cal plan innovation leader from Inland Empire Health Plan took the IEHP Health Equity vision into reality with the addition of interactive, secure AI-powered digital channels to augment traditional live and on/offline

channels to better support members in getting care and services they need.

Speakers:

Tahira Davis, MIS/BA, Director, Automation, Innovation & Data Engineering, IEHP (Inland Empire Health Plan)

D.J. Stojavljevic, Industry Solution Architect, Ushur

SDOH TRACK

The Unspoken Social Determinant of Health - Crafting a Loneliness Strategy for Optimal Outcomes

Location: Room 304/305/306

A former state Medicaid Director and panel of senior plan and partner executives join forces to discuss loneliness as a significant social determinant of health. Hear how they are effectively implementing innovative programs that address loneliness as a strategy to mitigate broader health-related social needs among at-risk members.

Speakers:

Natalie Cooper, MBA, MS, Plan President and CEO, Wellpoint Tennessee

Suze Cucci, MA-HLP, CPHQ, EVP, Engagement and Outcomes, Pyx Health

Jami Snyder, MA, President and CEO, JSN Strategies

POLICY TRACK

Unlocking the Potential of Technology-Driven Solutions in Medicaid: MCO Learnings and Recommendations

Location: JW Ballroom 1

In recent years, healthcare has seen an accelerated adoption of technology. While this shift improved healthcare delivery and access, it also highlighted the need for digital health literacy, system interoperability and flexibility to reduce coverage losses. MHPA and UnitedHealthcare discuss recommendations to modernize technology infrastructure to help support members.

Speaker Panel:

Paruj Acharya, Policy Director, Health Data, Technology and Consumer Experience, UnitedHealthcare Community & State

Steven Johnson, Executive Director, Government Programs, HCSC

Gabe Moreno, Vice President, Clinical Provider Data Capabilities, UnitedHealthcare Community & State

Nicolas Wilhelm, JD, Director, Regulatory Affairs, Medicaid Health Plans of America

MCH TRACK

Rethinking Pregnancy, Childbirth and Post-Partum Tools and Policies: A Panel Discussion

Sponsored by:



Location: Room 308

Pregnancy, childbirth and the post-partum period are increasingly precarious for women. With over 1.5 million babies born into Medicaid annually, the stakes are high. Learn ways we can drive better outcomes with common tools like the Health Risk Assessment and working on policy changes like making diapers a Medicaid benefit.

Speakers:

Lauren Barca, MHA, RN, BSN, Principal, LB Healthcare Consulting

Françoise Culley-Trotman, Chief Executive Officer, AlohaCare

Aerste Howells, Chief Commercial Officer, Icario

Debbie Weems, FACHE, Vice President, Health Solutions, Speak Benefits, a Morse Company

MLTSS TRACK

Barriers, Best Practices, and Policy Recommendations on Supporting a Consumer's Navigation of their Integrated Care Options

Location: Room 309/310

What are the key challenges consumers face in navigating their integrated care options? What are best practices states, plans, and other stakeholders are leveraging? Join speakers from the MLTSS Association to learn more about recommendations on consumer navigation efforts for dually eligible individuals.

Speakers:

*Ann Mary Ferrie, Vice President,
Strategy & Public Policy, VNS Health*

*Chamiere Greenaway, Senior Policy
Director, Healthspieren*

*Mary Kaschak, CEO, National MLTSS
Health Plan Association*

*Kate Paris, Vice President Policy
& Advocacy, UnitedHealthcare
Community & State*

EQUITY TRACK**From Bench to Bedside to Curbside:
Supporting Rising Risk Medicaid
Members Through Community-Based
Interventions**

Location: Room 302/303

Rising risk Medicaid members experience worse health outcomes and are often disconnected from primary care. In this session, leaders from Waymark and Aetna will share how they developed a collaborative program to provide proactive, community-based interventions to rising risk Medicaid members.

Speakers:

*Rajaie Batniji, Co-Founder & CEO,
Waymark*

*Sara Greenbaum, Head of Care
Operations, Waymark*

*Jerold Mammano, Division President,
Aetna Medicaid*

10:50am – 11:30am

**Networking & Refreshment
Break**

Location: JW Ballroom 5-10

11:30am – 12:45pm

**General Session - Award
Ceremony and Raffle Prizes**

Location: JW Ballroom 4

The true value of Medicaid managed care lies in budget stability and savings for states and the public, the members receiving preventive care, coordinated teams improving outcomes, and innovators advancing understanding of health determinants and access barriers. Join us in highlighting this value by honoring the advocates and visionaries dedicated to upholding Medicaid's mission and fulfilling MHPA's strategic objectives.

Speakers:

*David Jacobson, VP, Strategy & Business
Development, Arkansas Blue Cross &
Blue Shield*

*Mildred Menos, Director, Product
Administration – Medicaid, Horizon
BCBSNJ*

*Lindy Neubauer, Director of Marketing,
UnitedHealthcare Community & State*

12:45pm – 1:45pm

Networking Lunch

Location: JW Ballroom 5-10

CONCURRENT WORKSHOPS

1:45pm – 2:35pm

EQUITY TRACK**Shifting from Traditional to
Transformational Care: Reimagined****Roles and Strategic Partnerships
within MCOs to Deliver Equitable
Outcomes**

Location: Room 302/303

Collaboration is a mainstay of commitment to re-envisioning the health equity landscape. BlueCross and BlueShield of Illinois is dedicated to ongoing health equity disruption through strategic partnerships. BCBSIL and partners, PS2G and HCDCI, discuss their collective impact and encourage MCOs to shift their traditional roles to spark transformational change.

Speakers:

*Jean Drummond, President and CEO,
HealthCare Dynamics International
(HCDCI)*

*Suzanne Letang, Clinical Strategy
Manager, Quality Improvement &
Health Equity, Health Care Services
Corporation (HCSC)*

*Ravi Sankar, Senior Partner, Sagitec
Health*

*Deidre Sherman, Chief Customer
Officer, Public Sector Solutions Group
(PS2G)*

SDOH TRACK**Beyond Barriers: Utilizing Technology
to Overcome SDOH and Engage
Medicaid Populations**

Location: Room 309/310

Medicaid members are challenging to reach and engage, leaving MCOs in the dark. CareFirst and Scene Health partnered to understand and address SDOH and improve

medication adherence rates, access to preventative care, member engagement, clinical outcomes, and HEDIS measures in a hard-to-reach Medicaid cohort through an async video engagement approach.

Speakers:

*Suzanne Moxham, Director of
Quality, Accreditation, & Government
Programs, CareFirst BlueCross
BlueShield*

*Sebastian Seiguer, CEO and Co-
Founder, Scene Health*

POLICY MLTSS TRACK**Navigating the Medicare Advantage
Final Rule: Implications for Medicare
& Medicaid Integration**

Location: JW Ballroom 1

The CY 2025 Medicare Advantage Final Rule introduces substantial changes to Medicare and Medicaid integration. Join policy partners and health plans to discuss the implications for managed care, LTSS programs, and Medicare integration.

Speakers:

*Mary Kaschak, CEO, National MLTSS
Health Plan Association*

*Kate Paris, Vice President, Policy
& Advocacy, UnitedHealthcare
Community & State*

*Allison Rizer, Executive Vice President,
Payer Solutions, ATI*

2:35pm

End of Conference

attanehealth™

PERSONALIZED FOOD & NUTRITION CARE

What does a whole-person intervention look like?

Personalized Food and Nutrition Care Programs that empower Medicaid members to make healthier dietary choices.

Our platform combines personalized:

- Grocery services
- Nutrition coaching
- Actionable data

Get in Touch!

 (816) 280-4134

 info@attane-health.com

**Come visit us
@ Booth 404!**

www.attane-health.com

onedash

Identify, Act, Monitor

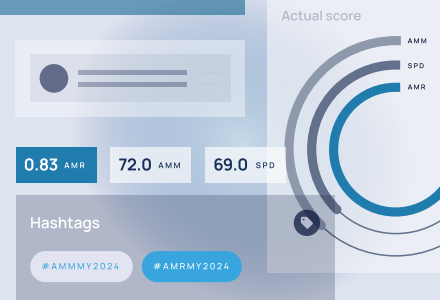
Powered by **caryhealth**

AI-Driven Health Intelligence

Featuring Clair AI Copilot

Identify priority populations, act to close gaps, monitor quality outcomes.

Proven to improve HEDIS and Star measures while reducing medical expenditure.



See our products in action at **BOOTH #417**



LEARN MORE AT
CARY.HEALTH/MHPA

BEST FOOT FORWARD

A Health Resource Management Company

NO RISK. ALL REWARD.

With our risk-free pricing model.



OUR MISSION:

To create a healthier landscape for all

OUR PURPOSE:

To maximize member engagement & elevate member care

OUR GUARANTEE:

To deliver a 100% no-risk pricing philosophy

Why haven't you already hired Best Foot Forward?

708-401-5222 | info@bffone.com
BestFootForwardSales.com

Join Us for a Panel Discussion Rethinking Pregnancy, Childbirth & Post-Partum Tools & Policies

Friday, September 13 | 10:00 AM

Featuring:

Francoise Culley-Trotman
CEO | AlohaCare

Debbie Weems
VP, Health Solutions | Speak Benefits

Lauren Barca, MHA, RN, BSN
Principal | LB Healthcare Consulting

Aerste Howells
CCO | Icario



icario



Integrated Medical and Behavioral Value-based Care Innovation for Children with Special Health Care Needs

Learn more at imaginepediatrics.org



Come meet us at booth #410

We innovate with purpose

Patients will always inform and inspire our science-based innovations, which continue to change and save lives. Applying rigorous science with compassion, we will continue to confidently address the most complex healthcare challenges of our time and unlock the potential medicines and technologies of tomorrow.

Learn more at jnj.com

Johnson & Johnson

© Johnson & Johnson Health Care Systems Inc. 2024 04/24 cp-444096v1



Medidrive can help you solve NEMT's 3 critical issues

- » Service Reliability
- » Cost Management
- » Data Accuracy

We are driven to solve the issues of unreliable transportation in the world of Non-Emergency Medical Transportation and improve the health and wellness of all Americans by compassionately transporting them on the road to better health.



MediDrive
A CTG Partner Company

Join us at booth 202/204 to learn how.

MediDrive.com



Enabling access to care is at the heart of what we do.

Our technology backed, high-touch supportive care solutions can **help you reach your DSNP members** where they are and when they need it most.

To learn more, visit www.modivcare.com/

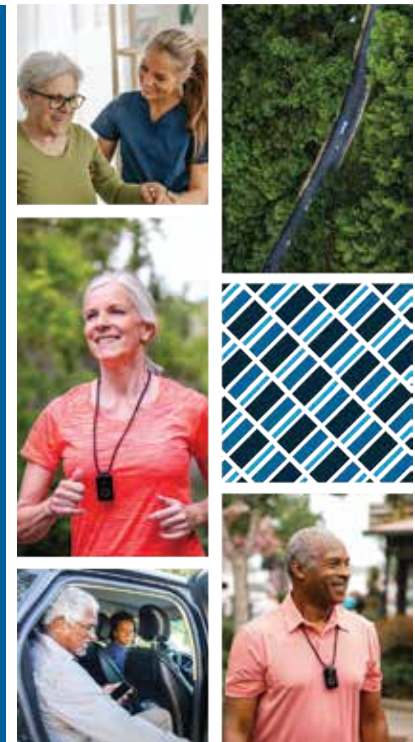
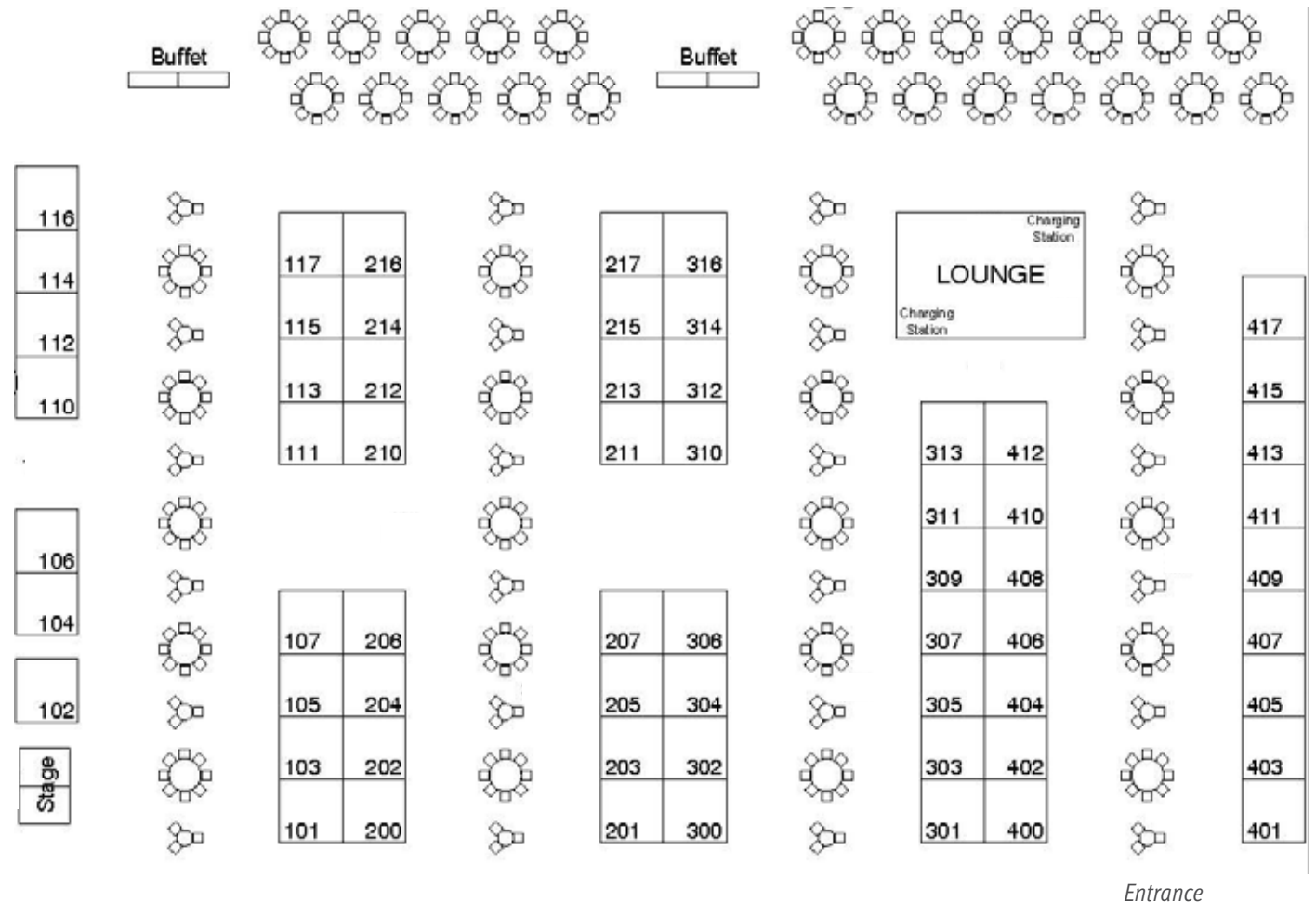


EXHIBIT FLOORPLAN

Location: JW Ballroom 5-10



EXHIBITOR INDEX

| | | | |
|---|-------------------------------|-------------------------------|--------------------------------------|
| PointClickCare..... 101 | Socially Determined 205 | Azara Healthcare..... 305 | Attane Health..... 404 |
| United Concordia Dental.....102 | Get Well 206 | Ushur..... 306 | National Equity Fund, Inc..... 405 |
| InComm Healthcare.....104 | Ochsner Health207 | NationsBenefits307 | Nomi Health..... 406 |
| Paradigm105 | FarmboxRx210 | NourishedRx 309 | Spectramedix.....407 |
| The Rawlings Group.....107 | mPulse 211 | izi Population Health.....310 | GroundGame Health 408 |
| Kaizen Health..... 112 | Delfina Care 213 | Magellan Healthcare 311 | FDB (First Databank, Inc.) 409 |
| Call The Car.....111 | CHESS Health 215 | Chef2Home 312 | Imagine Pediatrics.....410 |
| Marani Health..... 114 | IntellectAbility.....216 | Modivcare..... 313 | Centauri Health Solutions..... 411 |
| Johnson & Johnson..... 116 | Scene Health..... 217 | SKYGEN.....314 | Wider Circle.....412 |
| Vheda Health 117 | Icario 300 | Pyx Health.....316 | Erika’s Lighthouse..... 413 |
| Medeanalytics..... 200 | Momentm Technologies.....301 | Sellers Dorsey..... 400 | FTI Consulting.....415 |
| ProgenyHealth.....201 | FinThrive..... 302 | Myriad Genetics401 | CaryHealth 417 |
| MediDrive202, 204 | Solventum303 | Mom’s Meals 402 | |
| Medicaid Health Plans of America..... 203 | Papa 304 | SafeRide Health 403 | |

EXHIBITORS



Attane Health, Booth 404

Attane Health provides inclusive access to personalized, nutritious groceries and educational resources for those with chronic health conditions. Our digital health platform tailors food selection to cultural preferences. We help Medicaid plans improve health outcomes through quality food access and one-on-one nutrition coaching. Services include personalized health coaching, direct-to-home delivery of healthy groceries, seasonal fresh produce boxes, and nutrition education. Our patient-centered approach enhances engagement, chronic condition management, member satisfaction, and impacts healthcare costs.



Azara Healthcare, Booth 305

Azara Healthcare, the 2023 and 2024 Best in KLAS population health management solution, is the leading provider of quality measurement, analytics and reporting for the Community Health and physician practice market. Azara solutions empower more than 1,000 Community Health Centers, physician practices, Primary Care Associations, Health Center Controlled Networks, and clinically integrated networks in 42 states to improve the quality and efficiency of care for more than 25 million Americans through actionable data. To learn more about Azara Healthcare, visit www.azarahealthcare.com.



Call The Car, Booth 111

Call The Car brings an enlightened, compassionate mindset to health care transportation, empowering members, caregivers, and health agencies to achieve better outcomes. Health care transportation companies can no longer be only a broker model, a software company, or a fleet of vehicles; a health care transportation company needs to combine all three of these characteristics to provide quality service, oversight, and member centric care. Come ask about how Call the Car is leading the way in healthcare transportation.



CaryHealth, Booth 417

CaryHealth is redefining the digital health landscape through its innovative AI-driven ecosystem, designed to optimize outcomes for the health care industry's key players, including pharmaceutical manufacturers, health plans, and health systems. With a suite of advanced solutions, such as OneDash, Clair, CaryConnect, and CaryRx, CaryHealth enhances the pharmacy experience, offers cutting-edge AI tools, and delivers real-time data insights. This approach underscores CaryHealth's commitment to advancing healthcare efficiency and effectiveness through their platform. For more information, visit cary.health.



Centauri Health Solutions, Booth 411

Centauri Health Solutions assists health plans increase revenue and realize cost of care savings through our Dual and Disability (SSI/SSDI) Eligibility & Enrollment member outreach solutions. Utilizing established capabilities and infrastructure, we can also help payors navigate the end of Medicaid continuous enrollment and mitigate revenue loss. Additionally, Centauri offers technology-based solutions for coding and retrieval, clinical data exchange, and quality support which lead to more accurate reimbursements for clients and greater well-being for members.



Chef2Home, Booth 312

Our mission at Chef2Home is to create medically tailored chef-made meals and deliver them from our kitchen to yours. Every restaurant-inspired meal we make is frozen fresh. Our award-winning chefs work closely with registered dietitians to ensure that each ingredient is appropriate based upon the health condition for which that meal is being made. Chef2Home uses comprehensive, proven, and innovative culinary methods that have been built and perfected over the past 30 years.



CHESS Health, Booth 215

CHESS Health Amplifies the Impact of its Partners to Reach Individuals at the

Moments that Matter. CHESS Health is the leading provider of evidence-based digital health solutions supporting our partners in addressing the individual and societal crisis of substance use disorder. Its solutions span the entire lifecycle of SUD management — from prevention and intervention to treatment and recovery — and amplify the impact of providers, health plans, and governmental and community organizations by extending their reach to meet individuals at moments that matter.



Delfina Care, Booth 213

Delfina Care is a patient-centered maternal health platform that closes the loop between patient and provider. We bridge the maternal health gap by working closely with local providers and our virtual doulas to standardize access to quality care. Using clinically validated predictive models, we improve efficiency, predict the benefit of interventions to reduce health risk factors, improve health outcomes, and reduce costs for payors. Join us as we bring intelligent pregnancy care for all—to all.



Erika's Lighthouse

Erika's Lighthouse, Booth 413

Erika's Lighthouse is a nonprofit on a mission to break down the stigma surrounding mental health and provide free depression education and suicide prevention programs to any school, anywhere.



Improving life through better nutrition at home

844.280.2130 | momsmeals.com

At Mom's Meals®, we believe that better health begins with the very meals we eat.

Our medically tailored meal programs help ensure individuals have access to the nutrition they need, when they need it the most.

Stop by booth #402 to learn more.

mPulse

The New Standard for Health Engagement

Supporting Medicaid health plans with innovative engagement proven to drive outcomes.

mPulse partners with 300+ healthcare organizations to deliver better, more equitable health outcomes. Our Health and Insights technology creates consumer-centric journeys that power health action.

22pp

Improvement in Redetermination rates

10pp

Improvement in preventive screening rates

69%

Reduction in unnecessary ER visits

info@mPulse.com | mpulse.com

Myriad Genetic Laboratories is a proud sponsor of MHPA

- Providing biomarker genetic testing since 1991
- Serving Medicaid members for >20 years
- 3 core areas of expertise; prenatal, oncology, and mental health

Visit Myriad.com/managed-care/



Myriad genetics®

Visit booth #401



Non-Emergency Medical Transportation Software

See the power of our solution firsthand at Booth # 301

— NEMT SOFTWARE FEATURES —



Comprehensive Management



Integrated Mapping



Flexible Billing & Reporting

More Information

www.momentmtech.com



FarmboxRx, Booth 210

FarmboxRx delivers customized food as engagement programs that break down barriers to health equity while supporting sustainable, long-lasting quality outcomes for health plans and members. Through health literacy and nutrition, FarmboxRx addresses accessibility, affordability, and education to inspire self-efficacy and sustainable behavioral changes. For more information, contact us at info@farmbox-rx.com or visit farmboxrx.com



FDB (First Databank, Inc.), Booth 409

FDB (First Databank, Inc.) creates and delivers the world’s most powerful drug knowledge that ignites, inspires, and illuminates critical medication decisions. We collaborate with our partners to help improve patient safety, operational efficiency, and health outcomes. Our drug databases drive healthcare information systems that serve the majority of hospitals, physician practices, pharmacies, payers, and all other areas of healthcare and are used by millions of clinicians, business associates, and patients every day.



FinThrive, Booth 302

FinThrive rethinks revenue management to advance the healthcare economy. Our integrated technology adapts with health care professionals – freeing them from complexity and inefficiency – so they

can focus on doing their best work. Our end-to-end revenue management platform provides financial teams and stakeholders with greater reliability and control to deliver better outcomes for everyone.



FTI Consulting, Booth 415

Medicaid managed care organizations continue to develop innovative solutions to the challenges in today’s evolving health care landscape. The complexity associated with Medicaid managed care present challenges that our Payer team is uniquely positioned to address. Our payer experts bring comprehensive understanding of client goals and challenges in areas, such as operations, program development, procurement support, regulatory compliance, audits, contracting, competition, market entry, actuarial services, value-based care and health equity, and transactional and due diligence support.

Get Well

Get Well, Booth 206

Get Well empowers the communities you serve to take control of their health care journey. With the Get Well 360 Platform, organizations can now deliver consumer-centered experiences that build lifelong loyalty while deepening member relationships, improving quality, and growing market share. Each year, we empower organizations to activate, engage, and retain millions of patients.



GroundGame Health, Booth 408

GroundGame Health makes the difficult, community-level work of solving people’s social needs a reality. In partnership with community-based organizations (CBOs), we facilitate personalized, culturally tailored interactions through human-to-human connections that make the biggest difference in people’s lives. Our scalable, hyperlocal approach is driven by our proven technology platform and national network of CBOs.

Through our unique model, we increase financial capacity within communities to sustain social care delivery, making it easier for health plans and CBOs to fulfill their shared goal of closing the loop on health-related social needs and gaps in care.



i2i Population Health, Booth 310

Over 30 Health Plans across the country have chosen i2i as their partner to integrate real-time clinical and administrative data across 350+ federally qualified health centers, rural health centers, critical access & community hospitals. i2i’s NCQA Health Plan HEDIS and DAV Certifications demonstrate its extensive data capabilities that support MCO’s needs specific to Standard Supplemental Data and advanced quality analytics. Learn how we activate health plan and provider co-management of Medicaid members to improve HEDIS scores and close gaps in care at the clinics – all leading to better outcomes for members and their communities.



Icario, Booth 300

Icario is the leading digital-first health action company driving the next generation of healthcare. Powering over 100 million connections with members, the company’s health action platform unites whole person data, behavioral science, and digital-first omnichannel pathways to personally connect everyone to health. Icario deeply understands people and delivers personalization at scale for the most trusted health plans across the United States.



Imagine Pediatrics, Booth 410

At Imagine Pediatrics, we provide 24/7 virtual-first care in the home for children with complex medical conditions and special health care needs. Our nurses, doctors, therapists, and mobile clinicians work with primary care providers to bring an extra layer of support to caregivers and children, day or night, right from home. We help state Medicaid programs and managed care organizations provide innovative, value-based solutions for children with medical complexity and special health care needs.



InComm Healthcare, Booth 104

InComm Healthcare is the leader in innovative payment platforms and restricted-spend capabilities. Our proprietary OTC Network currently consists of 68,000+ retailers. Our online,

phone, and mail order options give your members the convenience they expect. Our Dual Network Card is revolutionizing supplemental benefits and incentives by allowing the flexibility to combine multiple benefits all on one card, including OTC products, healthy foods, wellness incentives, produce/meal delivery, dental/vision/hearing, and more. Learn more at <https://www.incomm.com/products/healthcare-solutions>.



IntellectAbility, Booth 216

IntellectAbility provides a comprehensive suite of risk resolution and learning tools for professional supporters. Our tools empower, educate, and inform those responsible for protecting, maintaining, and restoring health and a good quality of life for people with IDD. IntellectAbility replaces risk with health and wellness.

Johnson & Johnson

Johnson & Johnson, Booth 116

At Johnson & Johnson, we believe health is everything. Our strength in health care innovation empowers us to build a world where complex diseases are prevented, treated, and cured, where treatments are smarter and less invasive, and solutions are personal. Through our expertise in Innovative Medicine and MedTech, we are uniquely positioned to innovate across the full spectrum of health care solutions today to deliver the breakthroughs of tomorrow, and profoundly impact health

for humanity. Learn more at <https://www.jnj.com/> or at www.janssen.com/johnson-johnson-innovative-medicine. Follow us at @JanssenUS and @JNJInnovMed



Kaizen Health, Booth 112

Kaizen Health removes transportation as a barrier to living a healthy life by building diverse transportation networks powered by our proprietary platform. This increases access to clinical care, grocery stores, pharmacies, workout facilities, school, jobs programs, the justice system and social services for health systems, Medicaid/Medicare Advantage/Commercial health plans, non-profits, and public-school districts serving millions across the U.S.



Magellan Healthcare, Booth 311

Magellan Healthcare is a leading managed behavioral healthcare organization with over 50 years of experience making the complex easy—from care to administration. We support innovative ways of accessing better health through technology and deliver evidence-based, human-centered solutions for mental health and substance use with a quality focus. Magellan's partnership mindset and commitment to critical personal relationships make a positive difference, leading individuals to achieve healthy, vibrant lives.



Marani Health, Booth 114

Marani Health is a leading digital health company, co-founded by the Mayo Clinic, committed to transforming maternity and postpartum care through innovative technology. Our mission is to improve maternal health outcomes and provide better, more equitable care for all, including those with limited access to healthcare. Our AI-powered M•care System empowers our expert Clinical Care team to assess and manage risk through comprehensive digital assessments and key biometric data-- ensuring that everyone, regardless of their circumstances, receives the care they deserve.



MedeAnalytics, Booth 200

MedeAnalytics empowers commercial and government payers to facilitate equitable and affordable beneficiary care. We combine quality, cost and utilization data into a 360-degree view of population needs and utilization patterns. Equipped with these insights, Medicaid plans can identify and address socioeconomic disparities, ensure network adequacy, and strengthen value-based care arrangements--ultimately generating better outcomes for beneficiaries and communities. Learn more at www.medeanalytics.com.



Medicaid Health Plans of America, Booth 203

Medicaid Health Plans of America (MHPA) represents the interests of the Medicaid managed care industry through advocacy

and research to support innovative policy solutions that enhance the delivery of comprehensive, cost-effective, and quality health care for Medicaid enrollees.



MediDrive, Booths 202, 204

MediDrive represents the future of Non-Emergency Medical Transportation (NEMT). We are driven to improve the health of all Americans by compassionately transporting them on the road to better health. We're a technology and service-based company focused on NEMT and dedicated to solving the complexities of transporting patients to and from health care appointments and procedures, a critical social determinant of health. As the first NEMT provider using advanced AI machine-learning and predictive modeling, we deliver the highest level of quality control achieving a customer satisfaction score of 4.8 on a 5-point scale. Our complete end-to-end experience from appointment integration to eligibility to ride fulfillment is built on a scalable platform designed to maintain an industry-leading on-time performance of 96%. MediDrive serves Medicare, Medicaid, and providers throughout the U.S. Learn more at www.MediDrive.com



Modivcare, Booth 313

Modivcare is leading the transformation to better connect people with care, wherever they are. We serve the most underserved by facilitating non-emergency medical transportation, remote patient monitoring and personal and home care to enable greater access to care, reduce costs and improve outcomes



Momentm Technologies, Booth 301

Momentm is a dedicated Health & Human Services Transportation brand, emerging with 30+ years of prior experience from TripSpark and Trapeze. Momentm is a reflection of our commitment to addressing a key social determinant of health (SDOH), namely non-emergency medical transportation (NEMT), for many market segments including Managed Care Organizations, brokers, transportation providers, PACE, IDD and health groups. Our market-leading expertise is well-known, and now we are truly building Momentm together with you.



Mom's Meals, Booth 402

Mom's Meals provides refrigerated, ready-to-heat-and-eat meals through Medicaid and Medicare Advantage health plan benefits as well as for direct purchase. By offering many nutritionally tailored options and delivering to homes nationwide, Mom's Meals fuels better health outcomes for all. Its long-term care, chronic care and post-discharge care programs also allow clients to lead healthier lives while remaining independent at home. For more information, visit www.momsmeals.com.



mPulse, Booth 211

mPulse combines predictive analytics and advanced digital experience technology to deliver business efficiencies and more equitable health outcomes at scale. That's why 300+ health care organizations trust us to orchestrate personalized health journeys for their populations.



Myriad Genetics, Booth 401

Myriad Genetics partners with Medicaid to drive innovations in care with evidenced-based biomarker genetic tests that determine the risk of developing disease, assess the risk of disease progression, and guide treatment decisions within the Mental Health, Prenatal Care, and Oncology continuum of care where critical genetic insights can significantly improve patient outcomes and lower healthcare costs.



National Equity Fund, Inc., Booth 405

National Equity Fund, Inc. (NEF) is a leading non-profit, multi-family, affordable, real estate investment manager with a mission to create and deliver innovative, collaborative financial solutions to expand the creation and preservation of affordable housing. Through its Low-Income Housing Tax Credit (LIHTC) syndication platform and its lending and investing platforms, NEF

generates opportunities rooted in its vision that all individuals and families across the country have access to stable, safe, and affordable homes.



NationsBenefits®, Booth 307

NationsBenefits®, a leading supplemental benefits company, provides customized healthcare management solutions through clinically-focused interventions, exceptional service delivery, and technological innovation. Our integrated management services are designed to maximize quality and deliver value-based outcomes, while achieving cost advantages for managed care organizations and their members.



Nomi Health, Booth 406

Grounded in the most comprehensive benefits data in the world, Nomi Health is changing the economics of healthcare. When you choose Nomi Health as the business infrastructure for your health care offering members enjoy enhanced benefits, for less, payers gain visibility and control over spend, patients reduce their gaps in care, and providers receive hassle-free payments quickly. We serve self-funded employers, health care providers, state and local governments, Medicaid programs, third party health plan administrators, and more.



NourishedRx, Booth 309

NourishedRx is a nutrition company with a mission to serve the most vulnerable.

We focus on supporting national, regional, and local Managed Medicaid, Marketplace, and Medicare health plans' food-insecure members with diet-related chronic diseases and birthing members with high-risk social needs. NourishedRx programs are customizable and encompass a broad range of use cases. We are committed to helping the industry bend the health care cost curve through high-value and lower-cost innovations that drive lasting dietary change.



Ochsner Health, Booth 207

Ochsner Connected Health is applying technology and data to create customized, member-centered Digital Medicine solutions for cardiometabolic condition management. We've pioneered a true clinical model that includes medication management by licensed clinicians. We enable members to improve their health and patient experience while improving populations and reducing costs. Visit ochsner.org/MHPA24.



Papa, Booth 304

Papa is creating a new kind of care, built on human connection. Through our national network of vetted and trained Papa Pals, we provide companionship, personalized non-medical care, and everyday assistance to health plan members and employees. The result: lower medical costs, fewer trips to the emergency room, less loneliness, a

Seamless care for your Medicare and Medicaid members



Our approach

- ✔ Targets hard-to-reach populations with tailored solutions
- ✔ Orchestrates care using data-driven, real-time analytics
- ✔ Provides comprehensive multimodal access to care

Nexus by Nomi Health bridges care gaps, meeting patients where they are—virtually or in person. As your central hub, we simplify multi-vendor complexities, enhance care delivery, and monitor performance.



Our results

Cohesive care delivery, improved member satisfaction, and reduced wait times for your Medicare and Medicaid population.

Connect your members to comprehensive care
booth #406 | nomi.health/programs

Delivering Healthier Outcomes & Lowering the Total Cost of Care

Maternal Health • Infant NICU Health • Payment Integrity



Comprehensive support for you and your members
Learn more at progenyhealth.com

Proven Clinical Outcomes for Cardiometabolic Conditions

Aim for something more. Ochsner Digital Medicine offers 1:1 clinician-member matching and full medication management.

Annual Cost Reduction

\$2,200+

Average savings per member per year with Digital Medicine



4 of 5 members achieve hypertension and diabetes control within 6 months



To learn more, visit ochsner.org/MHPA24



SafeRide Health

Visit booth #403

Elevate your member experience and NEMT program



7 million+
Annual Rides



95+%
On-Time Rates



<0.25%
Grievance Rates

saferidehealth.com | sales@saferidehealth.com | (855) 955 7433

brighter outlook, and better health for so many. We're driven by our vision of a world where no one has to go it alone. Learn more at [Papa.com](https://www.papa.com).

Paradigm.

Paradigm, Booth 105

Paradigm offers comprehensive, adaptive solutions for home care agencies working with the VA, Medicaid, and other third-party payers. With services like billing automation, historical collections, enrollment support, authorization management, and growth education, Paradigm helps agencies maintain resilience and grow despite technological or payer changes.

PointClickCare®

PointClickCare, Booth 101

PointClickCare is a leading health care technology platform enabling meaningful collaboration and access to real-time insights at every stage of the patient healthcare journey. More than 27,000 long-term and post-acute care providers, over 3,100 hospitals and health systems, 2,200 ambulatory clinics, every major U.S. health plan across the U.S., and over 70 state and Government agencies use PointClickCare, enabling care collaboration and value-based care delivery for millions across North America.



ProgenyHealth, Booth 201

ProgenyHealth empowers our health plan partners to change the trajectory of maternal and infant health across

America. Our wholly integrated, tech-enabled maternal and infant care management solution provides uninterrupted support from prenatal health, through any resultant NICU stay, and all the way to one full year of life. By promoting predictable, equitable, and standardized high quality care journeys, we ensure healthier outcomes—and lower costs—across an entire at-risk population. Learn more at <https://info.progenyhealth.com/mhpa>.



Pyx Health, Booth 316

Pyx Health is the leading social health platform solving loneliness. This safe, scalable program seamlessly integrates compassionate humans with technology to identify, engage and support users in need. Data-driven insights and empathetic peer companion mentoring enable Pyx Health to eliminate social barriers to health and build deep relationships to address health and social needs. Providing an antidote to loneliness, Pyx Health creates a ripple effect across health care cost, quality and utilization. Visit pyxhealth.com. Because no one gets better alone.

SafeRide Health

SafeRide Health, Booth 403

SafeRide Health is a technology and services company dedicated to reducing barriers to care by improving the delivery of non-emergency medical transportation (NEMT) to people nationwide. SafeRide

leverages proprietary technology and a nationwide network of vetted transportation providers to elevate human dimensions of care and close the gap between need and access for the nation's most vulnerable populations. SafeRide's scalable and intuitive platform gives payers and health systems a more intelligent way to deliver cost-effective, on-demand transportation that connects health plan members to critical health care services. SafeRide serves the country's largest Medicare Advantage, Medicaid, and provider programs.

[Scene]

Scene Health, Booth 217

MedEngagement delivers a 360° approach to care that goes beyond medication adherence to improve quality metrics, clinical outcomes, and member experience. We deliver MedEngagement through a unique set of interventions, including video Directly Observed Therapy (video DOT).



Sellers Dorsey, Booth 400

For more than twenty years, Sellers Dorsey has supported transformational change in health care. Partnering with states, providers, health plans, and other stakeholders, we work to strengthen the critical safety-net system and achieve results that improve the communities our clients serve. Our team of former federal policy officials, Medicaid directors, healthcare executives and other professionals offer a breadth of expertise,

practical, and personalized knowledge to help our clients navigate the complexities of Medicaid.

SKYGEN

SKYGEN, Booth 314

SKYGEN transforms dental and vision benefits management and administration with flexible technology and services that connect and change lives for the better. Through partnerships with payers, providers and government agencies, SKYGEN helps its customers navigate dental and vision benefits management and administration. With its portfolio of third-party administration (TPA), intelligent Software as a Service (SaaS) automation, marketplace connectivity, risk management solutions, SKYGEN serves nearly 50 million members across all 50 states.



Socially Determined, Booth 205

Socially Determined is leading the integration of health and social care through social risk analytics. Its SocialScape® platform, social risk data, and industry-leading solutions empower health systems, plans and other risk-bearing organizations to manage risk, improve outcomes, and advance equity – at scale. Headquartered in Washington, DC, Socially Determined has been named as one of the 15 most promising health care companies by Fierce Healthcare.



Solventum, Booth 303

At Solventum, we create breakthrough solutions for our customers' toughest challenges by pioneering game-changing innovations at the intersection of health, material and data science to change patients' lives for the better — while enabling health care professionals to perform at their best.



SpectraMedix, Booth 407

SpectraMedix is a leader in Medicaid value-based analytics. Our platform delivers the complete picture of value-based performance to drive operational excellence, enhance provider experience, and improve performance across the spectrum of value-based contracts. With deep line-of-business expertise serving diverse Medicaid programs and value-based contract types, we empower plans with critical insights into financial performance, quality, risk, and utilization to help them enable providers, establish trust to accept greater risk, maximize revenue, and scale value-based arrangements.



The Rawlings Group, Booth 107

Since 1977, The Rawlings Group has provided clients with innovative services and solutions that drive claim recovery and cost containment in healthcare benefits. From pioneering health insurance subrogation, shaping the

legal environment, to the application of sophisticated technologies, leveraged by expertise for medical and pharmacy coordination of benefits and compliance, Rawlings continues to deliver industry-leading programs and develop forward-facing strategies to address the dynamic needs of our clients in an increasingly demanding environment.



United Concordia Dental, Booth 102

United Concordia Dental is a dental solutions partner focused on helping our customers enjoy better total health. With licensed carriers in all 50 states, D.C. and Puerto Rico, the company has more than 10 million members, one of the nation's largest networks, an AM Best A (Excellent) financial strength rating and recognized expertise in the dental industry. For more information, visit www.UnitedConcordia.com.



Ushur, Booth 306

Ushur's HIPAA secure, no-code Customer Experience Automation™ platform allows Medicaid plans to more effectively reach, support and influence members – for redetermination, member service, Quality, community supports/SDOH and more – with AI-powered, omni-channel, digital self-service. Augment live interactions and journeys with intelligent digital ones - quickly - with little to no IT support needed. Learn more at www.ushur.com.



Vheda Health, Booth 117

Vheda Health is the leader in virtual health engagement for health plans helping underserved populations. With over a decade of experience, our turnkey chronic care and maternity programs create a digital extension to your care management team that delivers an outstanding 84% member engagement and an average 3:1 return on investment. The most trusted government payors partner with Vheda Health to create the best healthcare experience that empowers people to live their best life.



Wider Circle, Booth 412

Wider Circle is a neighborhood-based health organization that empowers members of the same community to live happier, healthier lives. We partner with health plans and physician groups in neighborhoods across the country to provide fun and educational in-person and virtual programs for members who share similar interests and life experiences.

Medication nonadherence is costing you more than you think.

[Scene]

MedEngagement goes beyond traditional adherence strategies, empowering members with the tools and support needed for better health. Scene's expert care team connects with members to inspire and sustain lasting behavior change.



Nurse



Health Coach



Pharmacist



Learn more

Join us for Beyond Barriers: Utilizing Technology to Overcome SDOH and Engage Medicaid Populations
September 13th at 1:45pm | Suzanne Moxham & Sebastian Seiguer

www.scene.health | info@scene.health | [@SceneHealth](https://twitter.com/SceneHealth)

Welcome to MHPA 2024

We've been supporting oral health and dental insurance needs for over 50 years. And we would love to tell you more about our dedication to total health.

Grin from Within™

United **Concordia**
dentalSM

Group dental plans are administered by United Concordia Companies, Inc., and underwritten by United Concordia Insurance Company.
MX4030102 08/24

Reach, Support and Influence Your Members

Reach and engage members with Ushur's **HIPAA-secure Customer Experience Automation™ platform**. With our no-code, drag-and-drop workflow builder and pre-built Medicaid use cases, Medicaid plans can achieve time-to-value in weeks.

Augment live interactions with intelligent, two-way digital experiences:

- Quality and Population Health
- Member Service and Experience (SDOH, HRA)
- Care Navigation (Maternal Health, Chronic Conditions)
- Medication Adherence
- Renewal & Redetermination

ushur[®]
Make your work flow™



Visit us at Booth #306

ushur.com



Join us in Washington, DC



MHPA 2025 Advocacy Leadership Forum

– a conference focused on Medicaid **policy** and **advocacy** concluding with a full day meeting with Congress on key legislative priorities impacting Medicaid managed care.

March 4-6, 2025

The Madison Hotel, Washington, DC

MHPA25

SEE YOU NEXT YEAR

Kansas City, Kansas



SEPTEMBER 10-12, 2025

mhpa Awards

The MHPA Awards Program recognizes the tireless work of individuals and organizations who embrace the Association's mission to help care for vulnerable populations, advocate for the sustainability of the nation's public health safety net and provide leadership for MHPA to fulfill its strategic objectives.

Please join us in congratulating this year's honorees:

JOY WHEELER AWARD

Donna Stidham, RN
AIDS Healthcare Foundation

CONGRESSIONAL LEADERSHIP AWARD

U.S. Representative Troy Balderson
R-OH 12th District

ISADORE KING AWARD

ushur®

Wider Circle

Connecting neighbors
for better health

Wider Circle's Connect for Life® program helps neighbors support one another, leading to better health outcomes. Improving quality and satisfaction for your hard-to-reach members.



Wider Circle is a technology-enabled, peer-based community health organization that partners with health plans and providers to help close the last mile of healthcare for Medicare Advantage, Medicaid, and Dual Eligible Special Needs Plans (D-SNP) members.

By forming groups of neighbors in a culturally competent manner, Wider Circle restores the community support network critical for tackling the challenges in your members' lives. This trusted setting allows members to inform and motivate each other as they strive to achieve better health. When their circle is bigger, life is better. Engaged members are happier, healthier, more active, and are more likely to overcome isolation.

We act as a natural extension to your care coordination team, helping you improve your member engagement strategy and reach while improving key quality measures and addressing social determinants of health (SDOH) needs, leading to a lower cost of care.

Note: Outcome data represents results observed in past deployments; results may vary.

“ We experience joy and connection, and [our Specialist] is even teaching us how to eat healthier. Please don't ever end the Connect for Life program. Because of it, I know my health is the most important thing. We need this program! It has lifted our lives. ”

- Alice, Wider Circle member

Our programs support your challenges

| | | |
|-----------------------------|-----------------|------------------|
| SDOH and Health Equity | Gap Closures | Member Retention |
| Member Experience and CARES | Risk Adjustment | Cost of Care |

| | |
|---|------------------------------|
| \$138 | PEMPPM overall savings |
| 50% | lower disenrollment rate |
| 14 fewer | emergency department visits† |
| <small>Per 1,000 Wider Circle members versus general population</small> | |

Eye-opening results

- ▶ **22.5%** improvement in annual wellness visits
- ▶ Members are **3.8x** less likely to consider themselves lonely
- ▶ **88** overall Net Promoter Score (NPS)

Come see us
at Booth #412

Get in touch with us

To learn more about Wider Circle and how we can help your members experience better health outcomes, visit widercircle.com or email sales@widercircle.com.

THANK YOU TO OUR GENEROUS SPONSORS



Charging Station



Workshop Session, Branding



Keycard, Bag Insert, Conference Program



Bottled Water



Conference Wi-Fi



Mission Moment



Registration, Attendee Badges & Lanyards, Branding



Exhibit Hall Lounge, Conference Bag Insert, Branding



Board Lunch



General Session, Floor Clings



Door Hanger



Workshop Session



Charging Station



Breakfast



Charging Station



Email Blast

PointClickCare

Email Blast



Workshop Session



General Session



Conference Bag, Conference Bag Insert



Raffle Prize



Floor Clings



Mission Moment



Raffle Prize



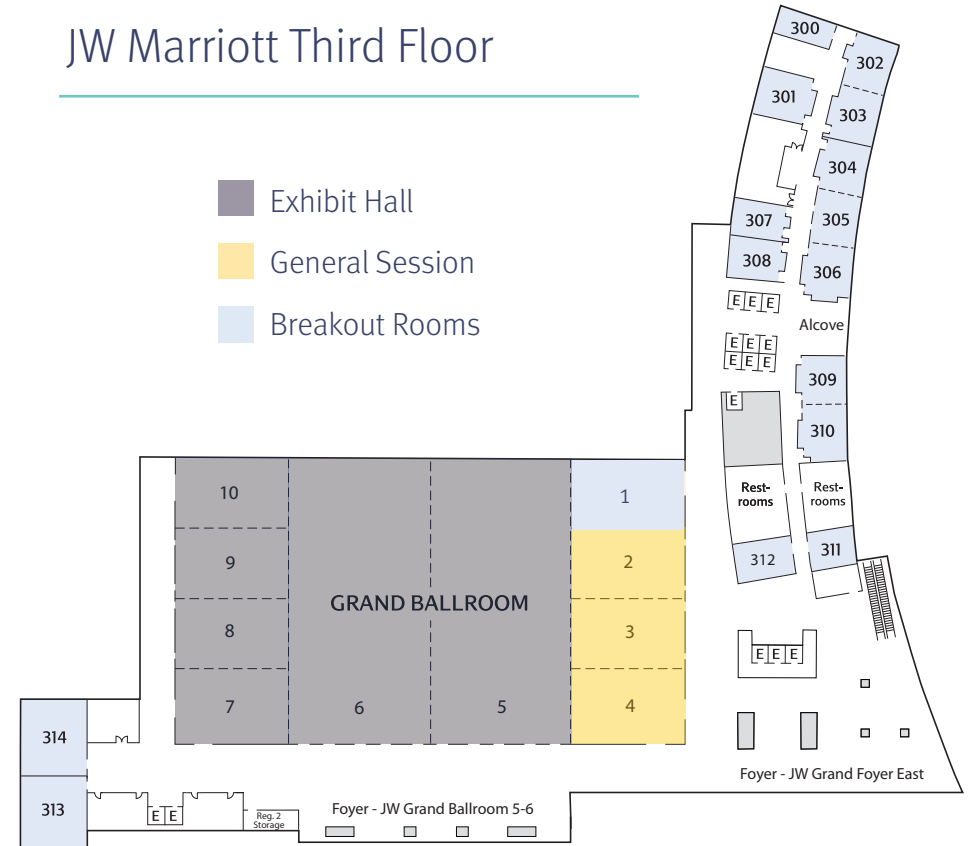
Conference Bag Insert



Conference Bag Insert

HOTEL MAP

JW Marriott Third Floor





info@mhcpa.org
medicaidplans.org

Conference Program
Sponsored by:

